

# Glaucous Gull

*Larus hyperboreus*

Category A

Rare migrant and winter visitor

28 records

Breeds along arctic coasts of North America, Asia, Greenland and Europe (in Iceland, Russia and Spitsbergen). Winters in Britain and Ireland annually in variable numbers, mainly in the north, with greatest concentrations in severe weather.

An uncommon but regular passage migrant and winter visitor to Kent.



Glaucous Gull at Hythe (Ian Roberts)

First recorded at Folkestone and Hythe in 1961 when a first-winter was seen at Folkestone on the 1<sup>st</sup> March. Following almost a gap of almost 20 years one was reported at Copt Point in 1980, but it has since occurred fairly regularly, with 26 subsequent records, 20 of which have been since 1985, as shown in figure 1.

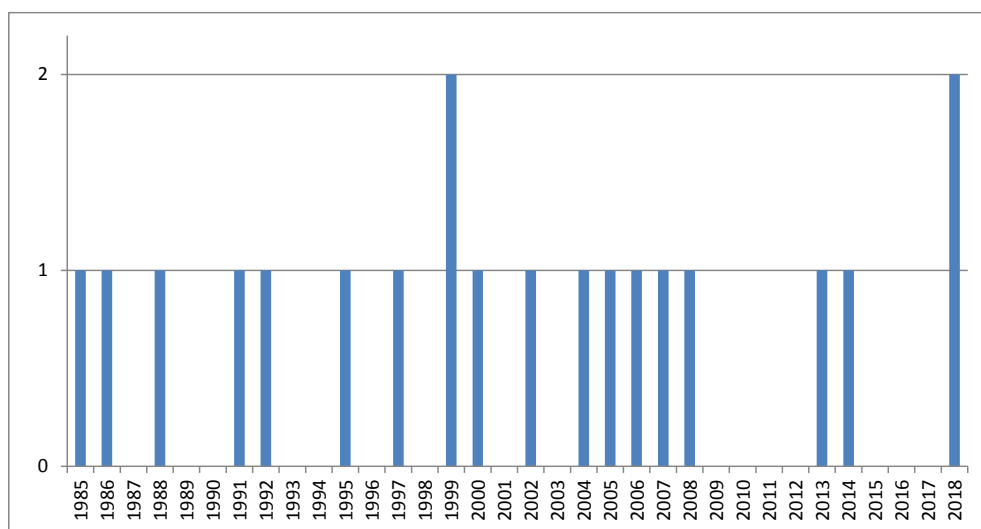


Figure 1: Glaucous Gull records since 1985 at Folkestone and Hythe

Arrival dates have been between the 13<sup>th</sup> November (week 46) and 20<sup>th</sup> May (week 20), though with a peak in late January / early February (weeks 4 to 7). Arrivals by week are shown in figure 2.

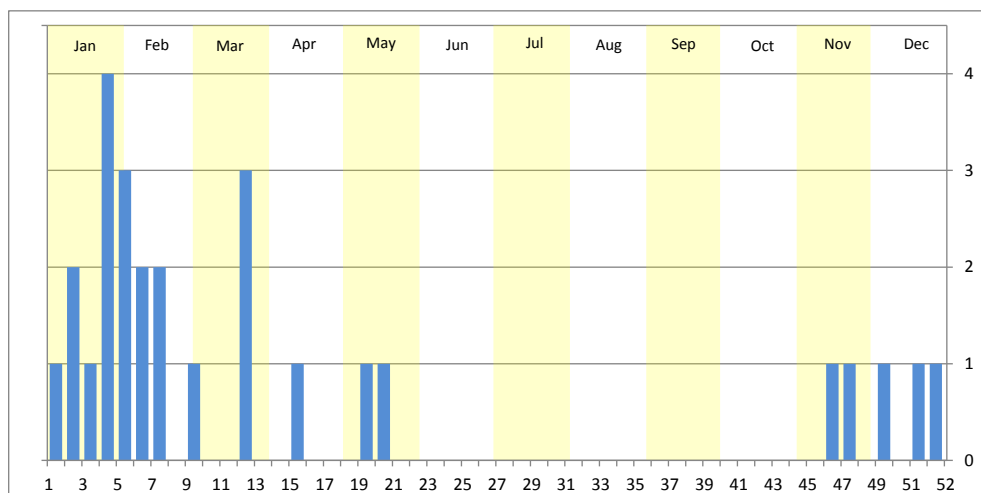


Figure 2: Glaucous Gull records at Folkestone and Hythe by week

The distribution of winter records recorded in the BTO/KOS Atlas (2007 – 2012) is shown in figure 3. The records shown relate to the 2008 long-staying individual which was seen at various locations within the Samphire Hoe area and the two seen at Hythe in November 2007. The majority of the other records are from the Copt Point / Folkestone Harbour area, with 3 at Nickolls Quarry, 3 at Samphire Hoe, 2 at Mill Point and another 2 at Hythe.

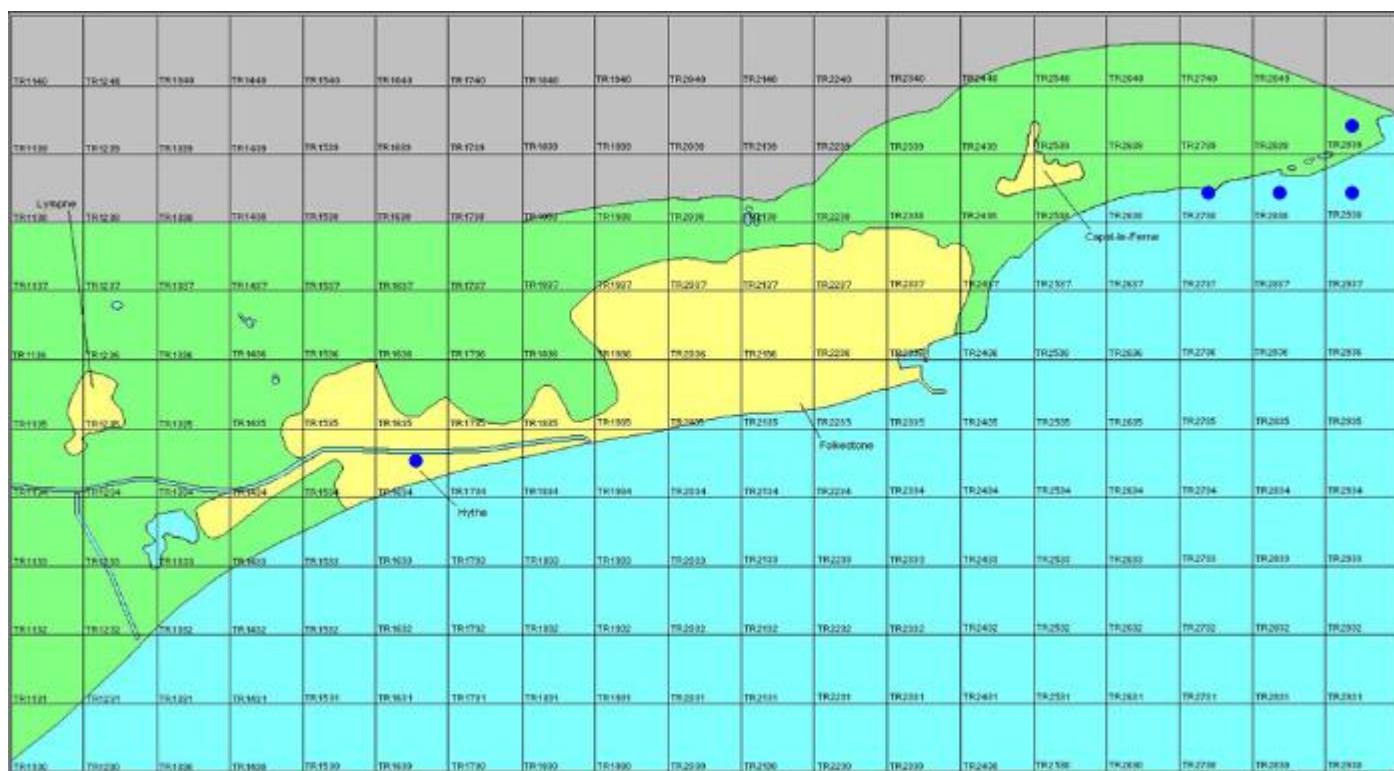


Figure 3: Wintering distribution of Glaucous Gull at Folkestone and Hythe (2007 – 2012 BTO/KOS Atlas)

The full list of records is as follows:

- 1961** Folkestone, immature, 1<sup>st</sup> March (D. F. Musson)
- 1980** Copt Point, first-winter, 26<sup>th</sup> January (R. F. Henson)
- 1981** Copt Point, sub-adult, 2<sup>nd</sup> February (A. Parker)
- 1983** Folkestone, second-winter, 21<sup>st</sup> March (P. Howe, R. Hollingsworth)
- 1983** Copt Point and Folkestone Harbour, first-winter, 3<sup>rd</sup> December to at least 14<sup>th</sup> April 1984 (R. Henson *et al*)
- 1984** Copt Point, first-winter (additional bird), 16<sup>th</sup> February (D. Weaver)
- 1984** Copt Point, first-winter (additional bird), 8<sup>th</sup> April (J. Tomlinson)
- 1985** Copt Point, one, 5<sup>th</sup> February (P. Howe)
- 1986** Copt Point, sub-adult, 10<sup>th</sup> January to 9<sup>th</sup> February (per Kent Bird Report)
- 1988** Copt Point, first-winter, 13<sup>th</sup> February (per Kent Bird Report)
- 1991** Mill Point, second-summer flew east, 10<sup>th</sup> May (I. A. Roberts)
- 1992** Copt Point, first-winter flew to Folkestone Harbour, 6<sup>th</sup> February (S. McMinn)
- 1995** Copt Point, first-winter, 13<sup>th</sup> January, presumed same flying over east Cheriton towards Copt Point on 26<sup>th</sup> January, also at Copt Point again on 13<sup>th</sup> February (D. A. Gibson)
- 1997** Samphire Hoe, first-winter roosting on Hoe then flew towards Dover, 25<sup>th</sup> January (D. A. Gibson)
- 1999** Folkestone Harbour, first-winter flew into outer harbour from east, then flew back east, 16<sup>th</sup> January (I. A. Roberts)
- 1999** Nickolls Quarry, adult on western side, 23<sup>rd</sup> January (R. K. Norman)
- 2000** Nickolls Quarry, immature on western side, 19<sup>th</sup> March (R. K. Norman)
- 2002** Copt Point, first-winter, 29<sup>th</sup> January (R. F. Henson)
- 2004** Folkestone Harbour, first-winter, 1<sup>st</sup> February (R. F. Henson)
- 2005** Mill Point, first-winter flew in from east and landed on sea, 21<sup>st</sup> March (I. A. Roberts)
- 2006** Nickolls Quarry, first-winter, 24<sup>th</sup> November (R. K. Norman)
- 2007** Hythe, two first-winters on beach opposite Stade Court, 13<sup>th</sup> November, photographed (I. A. Roberts)
- 2008** Samphire Hoe, first-winter, seen on six occasions between 1<sup>st</sup> January and 9<sup>th</sup> April (I. A. Roberts), commuting from in Dover Harbour where present from late December

**2013** Samphire Hoe, first-winter flew east, 20<sup>th</sup> December (I. A. Roberts)

**2014** Hythe, first-winter flew west, 27<sup>th</sup> December (I. A. Roberts)

**2018** Samphire Hoe, first-winter flew west, 23<sup>rd</sup> January (P. Smith)

**2018** Hythe, first-summer, 20<sup>th</sup> May, then intermittently to 28<sup>th</sup> May and presumed same flying west there on 17<sup>th</sup> July, photographed (S. McMinn, B. Harper, I. A. Roberts)



The two first-winter Glaucous Gulls at Hythe on 13<sup>th</sup> November 2007 (Ian Roberts)