

# Goldeneye

*Bucephala clangula*

Category A

Rare winter visitor and passage migrant

52 records

Breeds across Fenno-Scandia and Russia, south into northern Germany, Poland and the Baltic states, with a small population in Scotland. Moves south and west to winter around the Baltic, Denmark, Netherlands, Britain and Ireland, with progressively decreasing numbers from Belgium south to Mediterranean France.

A regular passage migrant and winter visitor to Kent.



Goldeneye at Botolph's Bridge (Brian Harper)

The first area record was in 1958 when two were at Nickoll's Quarry on the 30<sup>th</sup> November and one was seen at Sandling Park in 1960 (date not given). There were no subsequent sightings until 1986 but it has since occurred with some regularity, with 35 records in 32 years since (as shown in figure 1). The peak years to date were 1996 and 2003, both with six records.

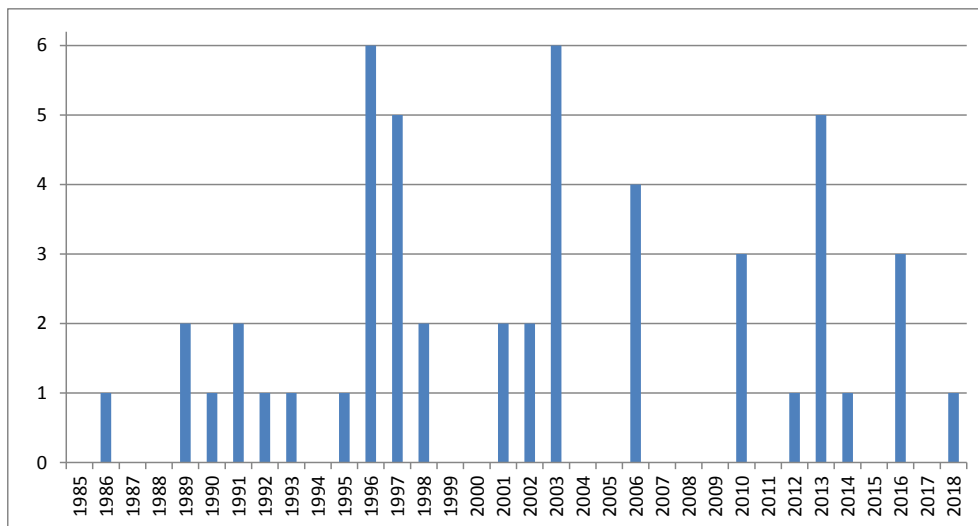


Figure 1: Goldeneye records since 1985 at Folkestone and Hythe

All records have occurred between the 2<sup>nd</sup> November (week 44) and the 20<sup>th</sup> March (week 12), with a distinct peak in late November/early December, as shown in figure 2.

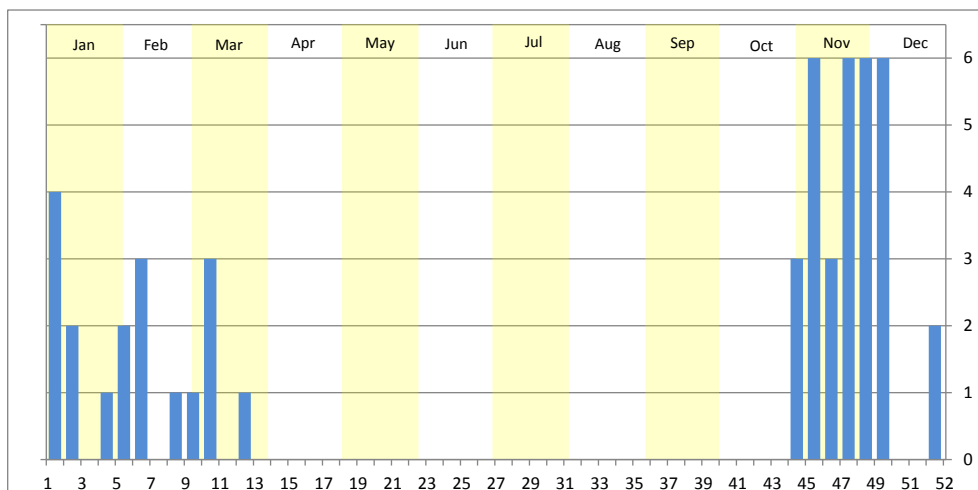


Figure 2: Goldeneye records at Folkestone and Hythe by week

The distribution of winter records recorded in the BTO/KOS Atlas (2007 – 2012) is shown in figure 3. Just over a third (18) of all records are from Nickoll's Quarry, with the majority of the rest from coastal sites between Samphire Hoe and the Willop Outfall, with Copt Point (8) and Mill Point (8) having produced the most. Two of the other three sightings were on the Hythe Canal (one adjacent to the Hotel Imperial Golf Course and one at West Hythe), with the remaining record from the lake at Folkestone Racecourse, Westenhanger.

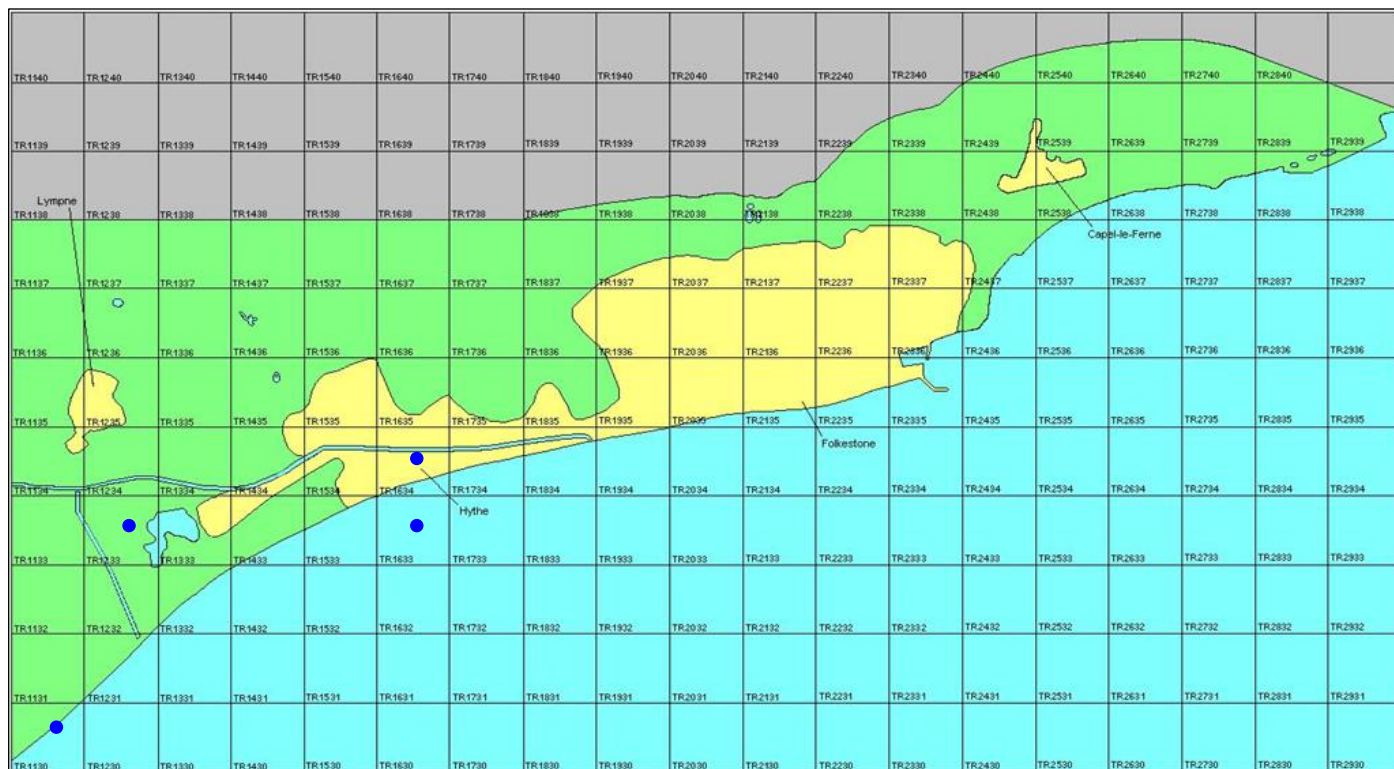


Figure 3: Wintering distribution of Goldeneye at Folkestone and Hythe (2007 – 2012 BTO/KOS Atlas)

The full list of records is as follows:

- 1958** Nickoll's Quarry, two, 30<sup>th</sup> November (R. K. Norman)
- 1960** Sandling Park, one, date not given (H. Schreiber)
- 1986** Copt Point, nine, 10<sup>th</sup> February (reported)
- 1989** Mill Point, three flew west, 2<sup>nd</sup> November (I. A. Roberts)
- 1989** Mill Point, pair flew east, 15<sup>th</sup> November (I. A. Roberts)
- 1990** Nickoll's Quarry, one, 11<sup>th</sup> November (R. K. Norman)
- 1991** Nickoll's Quarry, two to four, from 9<sup>th</sup> to 18 February (R. K. Norman)
- 1991** Copt Point, one, 20<sup>th</sup> November (reported)
- 1992** Hythe Ranges, eight flew west, 9<sup>th</sup> November (R. K. Norman)
- 1993** Nickoll's Quarry, immature/female, 1<sup>st</sup> January (R. K. Norman)
- 1995** Nickoll's Quarry, male, 24<sup>th</sup> January (R. K. Norman)
- 1996** Seabrook, immature/female, 7<sup>th</sup> to 27<sup>th</sup> January (M. Whybrow)
- 1996** Nickoll's Quarry, male, 4<sup>th</sup> February (R. K. Norman)
- 1996** Copt Point, one flew east, 21<sup>st</sup> February (D. A. Gibson)
- 1996** Folkestone, immature/female, 4<sup>th</sup> March (P. Howe, R. Thorogood)
- 1996** Copt Point, one flew east, 24<sup>th</sup> December (I. A. Roberts)
- 1996** Nickoll's Quarry, nine flew over, 26<sup>th</sup> December (R. K. Norman)
- 1997** Nickoll's Quarry, female and immature male, 1<sup>st</sup> January (D. A. Gibson, I. A. Roberts)
- 1997** Seabrook, female on the sea, 3<sup>rd</sup> January (I. A. Roberts)
- 1997** Hythe Canal, female, adjacent to Hythe Imperial Golf Course, 9<sup>th</sup> March (I. A. Roberts)
- 1997** Copt Point, immature/female flew west, 4<sup>th</sup> November (I. A. Roberts)
- 1997** Copt Point, one flew east, 4<sup>th</sup> November (D. A. Gibson)
- 1998** Nickoll's Quarry, male, 1<sup>st</sup> to 3<sup>rd</sup> December (R. K. Norman)
- 1998** Mill Point, immature/female flew east and then west, 8<sup>th</sup> December (I. A. Roberts)
- 2001** Nickoll's Quarry, one, 7<sup>th</sup> to 13<sup>th</sup> November, with four on 9<sup>th</sup> and two on 13<sup>th</sup> November (R. K. Norman)
- 2001** Copt Point, one flew east, 10<sup>th</sup> November (D. A. Gibson)

**2002** Copt Point, immature/female flew east, 20<sup>th</sup> November (I. A. Roberts)  
**2002** Nickoll's Quarry, male, 9<sup>th</sup> December (I. A. Roberts)  
**2003** Nickoll's Quarry, immature/female, 9<sup>th</sup> January (I. A. Roberts)  
**2003** Nickoll's Quarry, male, 5<sup>th</sup> February (I. A. Roberts)  
**2003** Mill Point, immature/female on the sea, 23<sup>rd</sup> March (I. A. Roberts)  
**2003** Samphire Hoe, male, 24<sup>th</sup> to 27<sup>th</sup> November, photographed (P. Holt, I. A. Roberts)  
**2003** Nickoll's Quarry, one, 7<sup>th</sup> December (R. K. Norman)  
**2003** West Hythe, male, 9<sup>th</sup> December (I. A. Roberts), possibly same as above  
**2006** Folkestone Racecourse, Westenhanger, immature/female, 3<sup>rd</sup> February (I. A. Roberts)  
**2006** Sandgate, five (four drakes) on the sea, 27<sup>th</sup> February (I. A. Roberts)  
**2006** Mill Point, male flew west, 2<sup>nd</sup> November (I. A. Roberts)  
**2006** Nickoll's Quarry, immature/female, 21<sup>st</sup> November (I. A. Roberts)  
**2010** Willop Outfall, immature/female on the sea, 27<sup>th</sup> November (B. Harper)  
**2010** Nickoll's Quarry, male, 1<sup>st</sup> December, photographed (I. A. Roberts)  
**2010** Hythe, immature/female flew west, 2<sup>nd</sup> December (I. A. Roberts)  
**2012** Willop Outfall, male on the sea, 8<sup>th</sup> December (B. Harper, M. Harper, I. A. Roberts)  
**2013** Samphire Hoe, male flew east, 11<sup>th</sup> January (G. J. A. Burton)  
**2013** Willop Outfall, female flew east, 10<sup>th</sup> March (B. Harper)  
**2013** Nickoll's Quarry, immature/female, 17<sup>th</sup> November (B. Harper)  
**2013** Samphire Hoe, male flew west, 20<sup>th</sup> November (I. A. Roberts)  
**2013** Samphire Hoe, immature/female flew east, 28<sup>th</sup> November (I. A. Roberts)  
**2014** Botolph's Bridge, male, 31<sup>st</sup> December to at least 16<sup>th</sup> January 2015 (B. Harper, I. A. Roberts, C. Gillard *et al*)  
**2016** Mill Point, male flew east then west, 7<sup>th</sup> November (I. A. Roberts)  
**2016** Mill Point, immature/female flew east, 8<sup>th</sup> November (I. A. Roberts)  
**2016** Nickolls Quarry, male, 2<sup>nd</sup> December (B. Harper)  
**2018** Mill Point, immature/female flew east, 20<sup>th</sup> November (B. Harper, I. A. Roberts)