

Pheasant

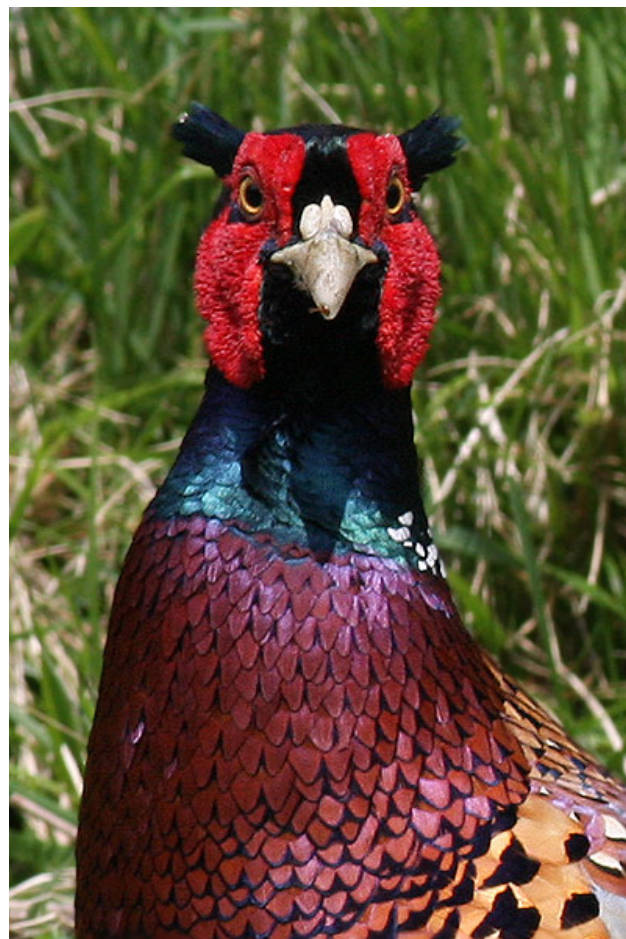
Phasianus colchicus

Category C

Breeding resident

A common, widespread and possibly increasing resident species in Kent, with numbers boosted each autumn by birds released for shooting.

The full species account will follow but the breeding and wintering distribution maps based on the 2007 – 2012 BTO / KOS atlas are provided below.



Pheasant at Saltwood Castle (Brian Harper)

The distribution of breeding records recorded in the BTO/KOS Atlas (2007 – 2012) is shown in figure 1.

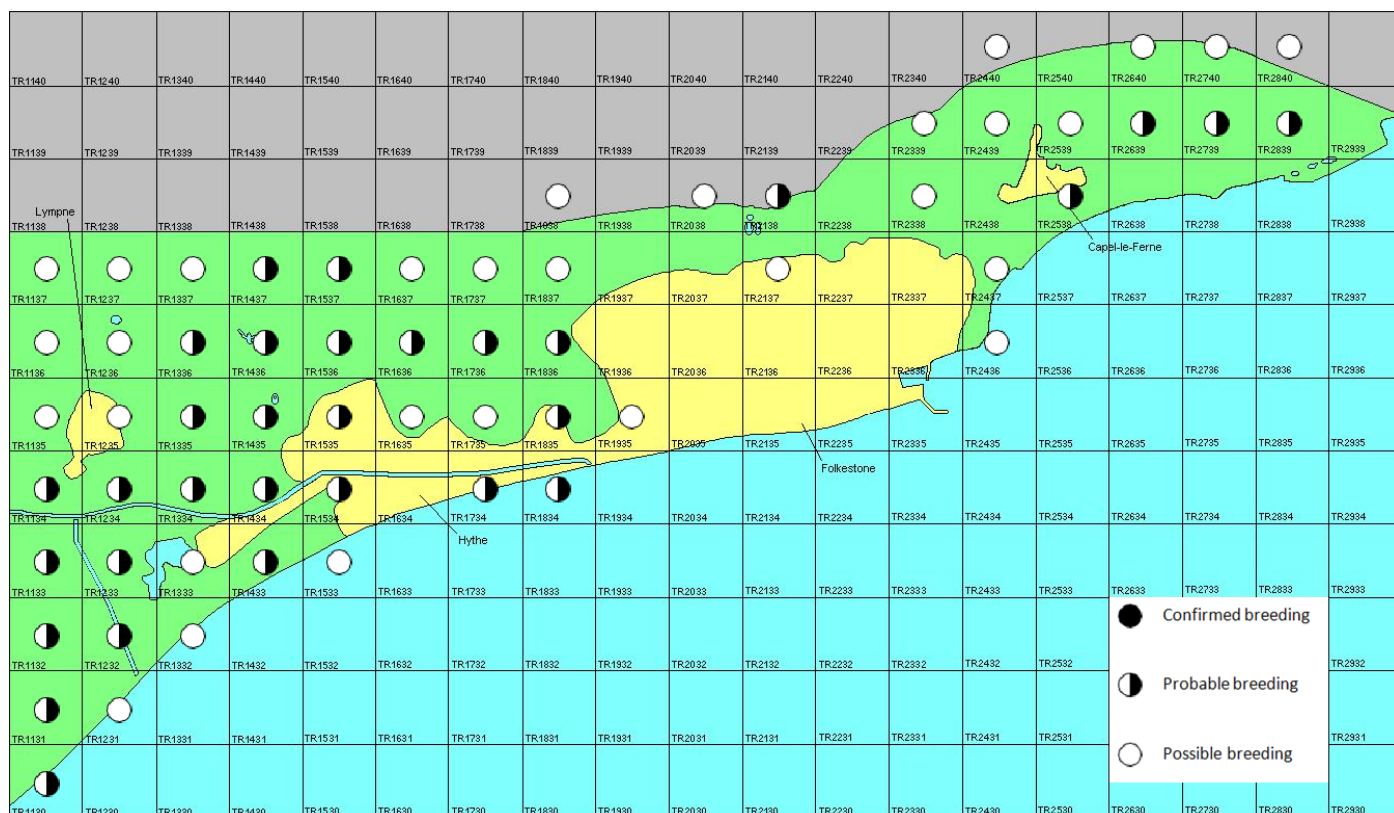


Figure 1: Breeding distribution of Pheasant at Folkestone and Hythe by 1km square

The distribution of winter records recorded in the BTO/KOS Atlas (2007 – 2012) is shown in figure 2.

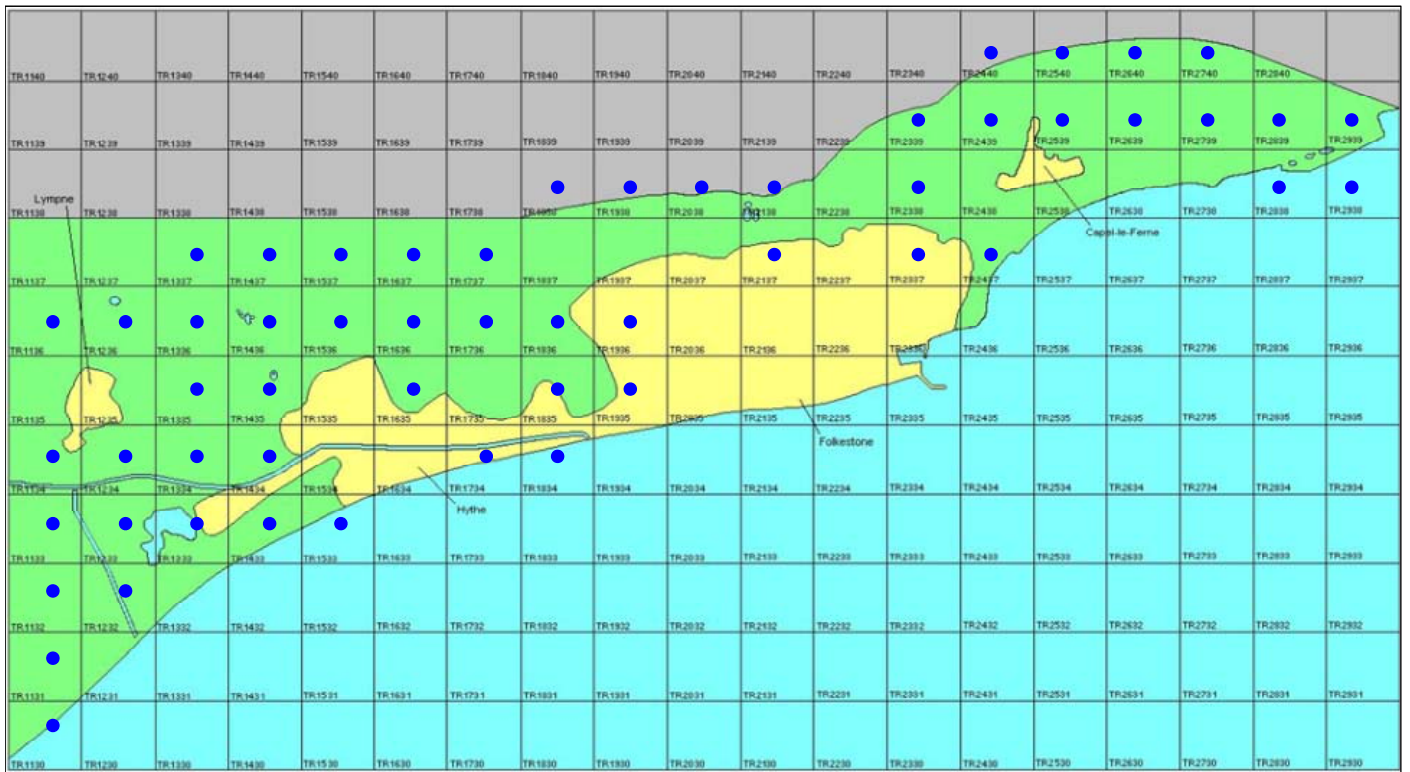


Figure 2: Wintering distribution of Pheasant at Folkestone and Hythe by 1km square